



Designer Manufacturer

ZAG

Protective cabinet for large thermal printers

Characteristics:

- Single piece, heat-formed thermoplastic cabinet body, giving the same structural strength on the front, sides and back;
- Walls in 19 mm thick composite, through-coloured to guarantee cabinet protection & waterproofing;
- Cabinet has a smooth surface to facilitate cleaning and prevent the buildup of dust/waste;
- Two composite mounts can be added to hold and lift the printer ;
- Connectivity : the cabinet is supplied with two standard cable glands (7 to 13 mm) to allow cables to enter the cabinet.

Handling:

- Side access to thermal printer;
- Cabinet openings;
- Side panel swings out on a piano hinge and held in place by two latches;
- Heat-formed cover with PVC reinforcement to provide optimal resistance:
 - Flap closes against lip-seals to guarantee leak-tightness;
 - Attached with piano hinges and supported by two pneumatic cylinders.

Front panel:

- Access to printer controls and labels via the front of the cabinet using a swing-out flap in 6mm PMMA (transparent thermoplastic).

Advantages:

- Shock resistant
- High levels of physical and thermal protection
- Suitable for large-sized thermal printers

Also available in an 'Extreme Cold' version with heating system (down to -30°C) and in an 'Controlled Cold' version



ZAG DIMENSIONS (mm):

Overall external W 450 x D 750 x H 550 mm

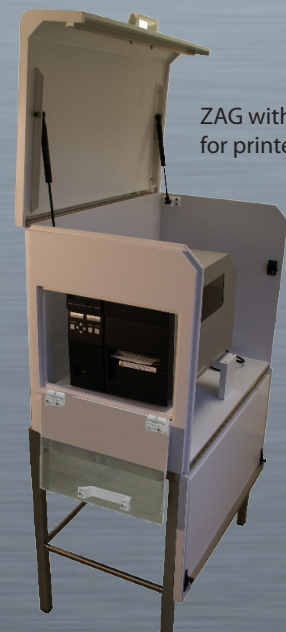
Usable internal W 420 x D 710 x H 520 mm



ZAG with optional SLOT & GUIDE + Option KDL



ZAG with optional SLOT & GUIDE



ZAG with mounts for printer



Fixed and mobile workstations

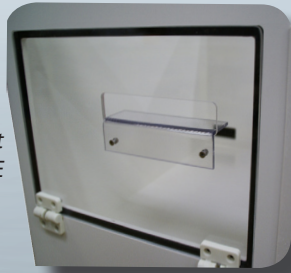
DESCRIPTION OF OPTIONS

*The ideal protection system
for large-sized thermal printers*



STAINLESS STEEL LEGS option

- Legs in mechanically welded stainless steel - dimensions (mm): W 750 x D 440 x H 670;
- Cabinet attached to the upper frame on the legs.



Slot
LABEL SLOT + GUIDE

LABEL SLOT option

- SLOT: Cut into the PMMA flap on the front of the cabinet;
- LABEL SLOT + GUIDE: Cut into the PMMA flap on the front of the cabinet, with a guide for easier label handling.



Option KDL

- Specially designed cable gland system - allows cables to be passed into the cabinet without having to remove any connectors;
- The cable glands are in two sections which hold the cables in leaktight seals;
- Generally fitted to the right hand side panel, assuring a leaktight cabinet seal.



Additional options:

- TAV L 12 or L 24: Inspection port in unbreakable polycarbonate;
- RCA: Thermostatically-controlled 150W heater for CONTROLLED COLD environments (temperatures of between -5 and -30°C).